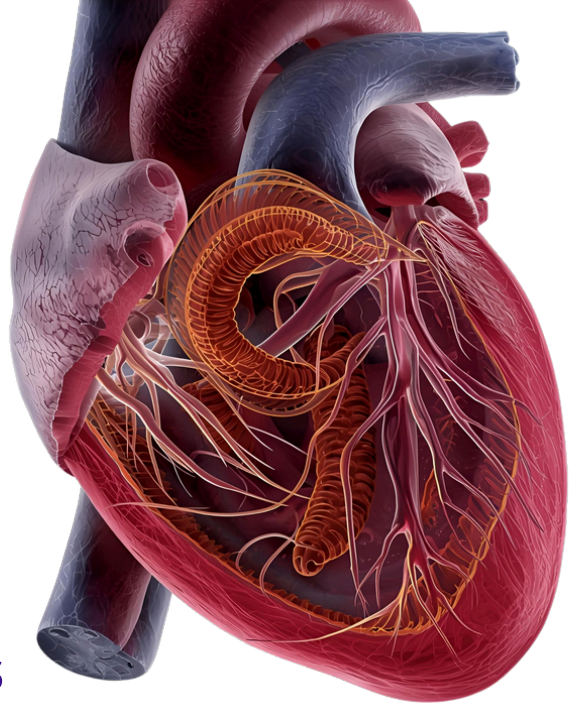


# HEARTWORM GUIDE

Information from the **VOTS Experts**



## HOW HEARTWORMS SPREAD

- Mosquitoes carry heartworm larvae.
- When a mosquito bites an infected pet, it picks up larvae.
- The next bite can infect another pet.

## INSIDE YOUR PET



### Dogs:

- Larvae travel through the bloodstream to the heart, lungs, and arteries.
- Within 6 months, worms can grow 12 inches or longer.
- Mature worms reproduce, and mosquitoes can spread the infection.
- Worms can live up to 7 years.

### Cats:

- Larvae reach the heart and lungs, but cats usually have fewer worms.
- Even a single worm can cause serious heart and lung disease.
- Cats are less likely to spread heartworms to other animals.

## SIGNS & SYMPTOMS

### DOGS:

- Persistent cough
- Fatigue or reluctance to exercise
- Weight loss
- Heart and lung damage

### CATS:

- Vomiting
- Coughing or difficulty breathing
- Lethargy
- Heart or lung failure in severe cases

## PREVENTION & TREATMENT



- Prevention is safer and more affordable than treatment.
- Monthly heartworm preventives protect dogs and cats.
- Dogs can be treated, but it's expensive, may require follow-up tests, and can be risky.
- No approved treatment exists for cats—prevention is essential.

## SEE MORE ABOUT TREATMENT AT VOTS.VET

We offer a wide range of vaccinations tailored to your pet's lifestyle, ensuring they are protected against various diseases in their environment!

